

The steering controller LG2 is developed for the rough use in working machines. A long service life and high reliability is achieved by the latest contactless Hall technology. The CAN bus interface makes it easy to integrate the controller into any machine. The LG 2 is available with a handle or without a handle with a shaft outlet (12mm).

Technical data

Mechanical life LG2	10 million rotations
Supply voltage	See interface
Operation temperature	-40°C to +85°C
Degree of protection	Up to IP67
Functional safety	PLd compatible (EN ISO 13849, complies SIL2 to DIN EN IEC 61508)



	LG2	-1	-R	E3161	-X
Basic unit					
LG2 Steering Encoder					
Grip					
0 Without					
1 With grip					
Axis 1					
R With friction brake, without detent					
Interface <i>(description see on the following pages)</i>					
E3xx CAN-interface					
E4xx CANopen Safety interface					
Special model					
X Special / customer specified					

CAN

Supply voltage	9-32 V DC
Idle current consumption	120 mA (24 V DC)
Protocol	CANopen CiA DS 301 or SAE J1939 (based on)
Baud rate	20 kBit/s to 1 Mbit/s (standard 250 kBit/s)
Wiring	CAN (IN) cable 300 mm with plug connector M12 (male) CAN (OUT) cable 300 mm with plug connector M12 (female)

E316 1

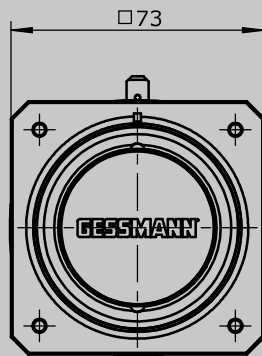
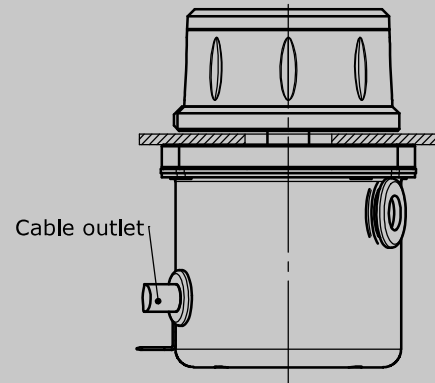
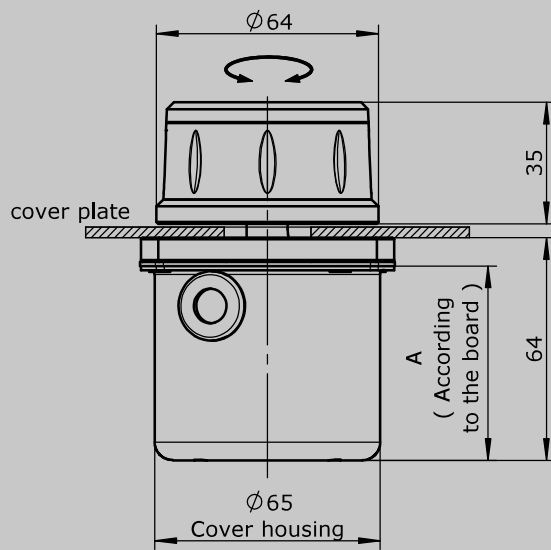
CANopen Safety

Supply voltage	9-32 V DC
Idle current consumption	120 mA (24 V DC)
Protocol	CANopen Safety EN50325-5
Baud rate	20 kBit/s to 1 MBit/s (standard 250 kBit/s)
Wiring	CAN (IN) cable 300 mm with plug connector M12 (male) CAN (OUT) cable 300 mm with plug connector M12 (female)

E415 1

Attachments

Z01	Mating connector M12 male insert with 2 m cable	20201140
Z02	Mating connector M12 female insert with 2 m cable	20202298



Hole pattern
(installed from below)

