

The Hall-Push Button impressed by its durability and versatility. It is available in five basic versions. By combining different lighting options, colours and symbols, it is possible to customize.

Technical data

Mechanical life	10 million operating cycles
Operation temperature	-40°C til +85°C
Degree of protection	IP67
Functional safety	PLd compatible (EN ISO 13849, complies SIL2 to DIN EN IEC 61508)



		HD1	-2	-1	-1	-1	-E0111	-X
Basic unit								
HD1	Hall-Push Button digital with bellow							
HD2	Hall-Push Button digital without bellow							
HD3	Hall-Push Button digital, flat mounting without bellow							
HD4	Hall-Push Button digital without bellow, actuator convex							
HD5	Hall-Push Button digital, flat mounting without bellow, actuator convex							
Illumination								
1	Unlighted							
2	Night light white, U_LED=4,5 - 5,5 V*							
3	Functional lighting 2-coloured red-green (single shiftable) U_LED=4,5 - 5,5 V*							
4	Functional lighting 2-coloured red-white (single shiftable) U_LED=4,5 - 5,5 V*							
5	Functional lighting 2-coloured green-white (single shiftable) U_LED=4,5 - 5,5 V*							
*Not possible with HD4 and HD5!								
Actuator colour								
1	Transparent							
2	Black*							
3	White*							
4	Yellow*							
5	Green*							
6	Blue*							
7	Red*							
8	Orange*							
9	Grey*							
*Only possible by HD4 and HD5!								
Icon coloured cap insert								
0	Without icon coloured cap insert (only for HD4 and HD5)							
1	White transparent* (Print on back side possible, thereby the print is resistant to abrasion!)							
2	White*							
3	Yellow*							
4	Green*							
5	Blue*							
6	Black*							
7	Red*							
8	Orange*							
*Not possible with HD4 and HD5!								

Technical details may vary based on configuration or application! Technical data subject to change without notice!

HD1 -2 -1 -1 -1 -E0111 -X

Symbol

- 1 Without
- 2 Buzzer*
- 3 Arrow up*
- 4 Arrow down*
- 5 Turtle*
- 6 Rabbit*
- X Custom-made*

*Only possible by HD1 til HD3!

*More Symbols on request!

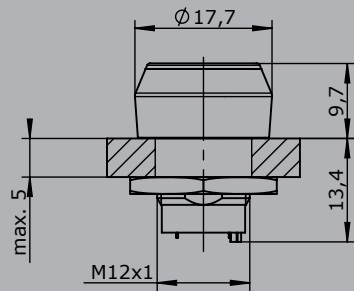
Interface

- E0101 Push button signal not redundant $U_b=4,5 - 5,5$ V DC
- E0111 Push button signal redundant $U_b=4,5 - 5,5$ V DC
- E0201 Push button signal not redundant $U_b=4 - 32$ V DC
- E0211 Push button signal redundant $U_b=4 - 32$ V DC
- 0 Energy safe I (Hall) max. = 3,2 mA (limited)
- 1 Possible for optocoupler and PLC
- 2 Power switch (Open Drain) $I_{Hallmax}= 25$ mA

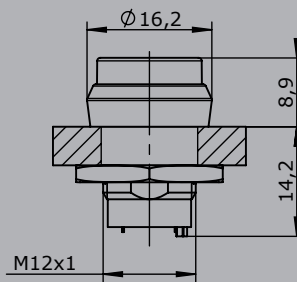
Special model

- X Special / customer specified

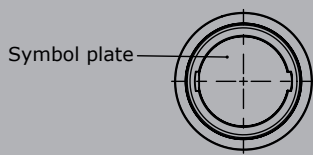
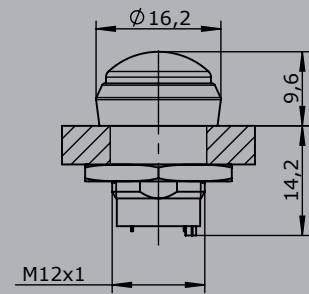
Edition:
HD1



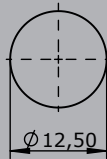
Edition:
HD2



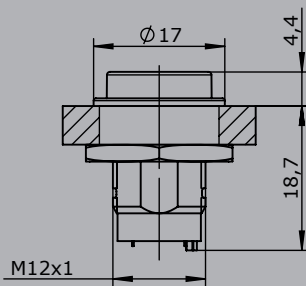
Edition:
HD4



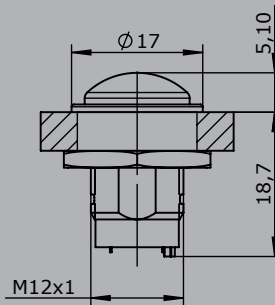
Hole pattern
HD1, HD2, HD4



Edition:
HD3



Edition:
HD5



Hole pattern
HD3, HD5

